



Flap-Gate barriers





Adaption and innovation

Gotschlich repeatedly sets new standards with its diverse product line. Along with patented and well-tried and tested models, customer specifications are also taken into account.



Beautiful, stable, sturdy.

Whether aesthetically-challenging interiors or frequently-used public spaces - the flap-gate barriers from Gotschlich can be used in all areas of everyday life.



All flap-gate barriers combine a high rate of passage and secure, precise separation.

Depending on the situation and requirements at the setup location, parameters such as opening speed, stop distances, hold-open time, sensitivity and much more, can be customized and adjusted at any time.

Flap-Gate barriers

Sleek and elegant design. Integrated readers, screens and lane signals. Can't argue with that.

The Axioma flap-gate barrier is the perfect example of optimal synergy between modern architecture and functionality. The housing is made of high-quality stainless steel and can be equipped with a variety of glass inserts.



Quality characteristics
of all Gotschlich flap-gate barriers

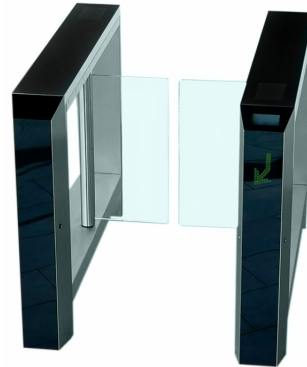
- ▶ Reliable sensors for increased safety
 - ▶ Comfortable, touch-less access
 - ▶ Barrier-free use
 - ▶ High energy efficiency, low-noise operation
- ✚ The height of all Axioma models can be adjusted to customer's wishes (up to 1500 mm)



The Selection LF protects against unauthorized access with its high linear swing doors and sets visual highlights due to its transparent design.

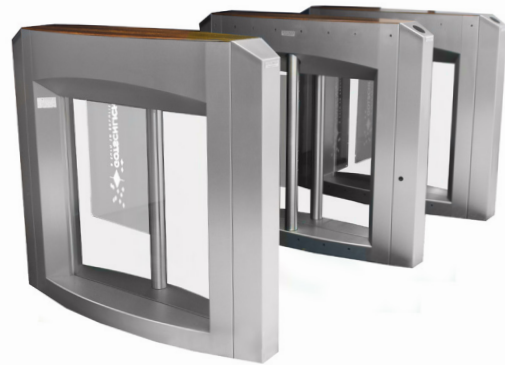
Axioma und Axioma VIP

- ◆ Versicherungskammer Bavaria
- ◆ BAWAG PSK Bank (Vienna)
- ◆ Luschniki Olympic Stadium (Russia)
- ◆ World War II Museum Danzig (Poland)
- ◆ Krasnodar Stadium (Russia)
- ◆ Hutchison Drei Austria Headquarters (Vienna)
- ◆ Alpenzoo Innsbruck (Tyrol)



Selection DF

- ◆ Bundesbad Alte Donau (Vienna)
- ◆ Minimundus Amusement ParK (Klagenfurt)
- ◆ Aquarium Vladivostok (Russia)
- ◆ Rubin Kazan Stadium (Russia)
- ◆ Austrian Airlines Headquarters (Vienna)
- ◆ Donbass Arena (Ukraine)
- ◆ Prince Sultan bin Fahd Stadium (Saudi Arabia)
- ◆ Luanda and Cabinda Stadium (Angola)
- ◆ Lubango and Benguela Stadium (Angola)
- ◆ Velestroj Business Center (Moscow)
- ◆ Wagenburg Ferry Station (The Netherlands)
- ◆ MGC Fashion Park (Vienna)
- ◆ Aero Express Moscow, Kazan and Sochi



Selection LF

- ◆ United Nations Vienna
- ◆ ÖBB Railway Station Bruck an der Mur
- ◆ ÖBB Railway Station Hütteldorf
- ◆ Millennium Tower (Vienna)
- ◆ Austrian Interior Ministry
- ◆ Generali Center (Vienna)
- ◆ Kapsch Wienerberg
- ◆ ENI Austria Millennium Tower

